



### SCOPE

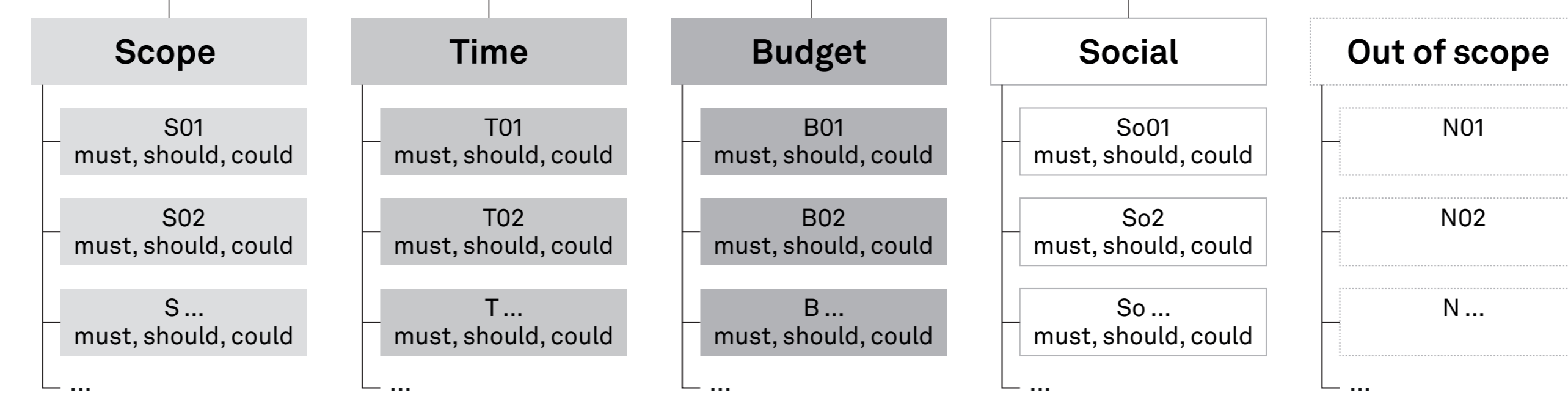
### TIME

## GOALS

### BUDGET

### SOCIAL

### OUT OF SCOPE



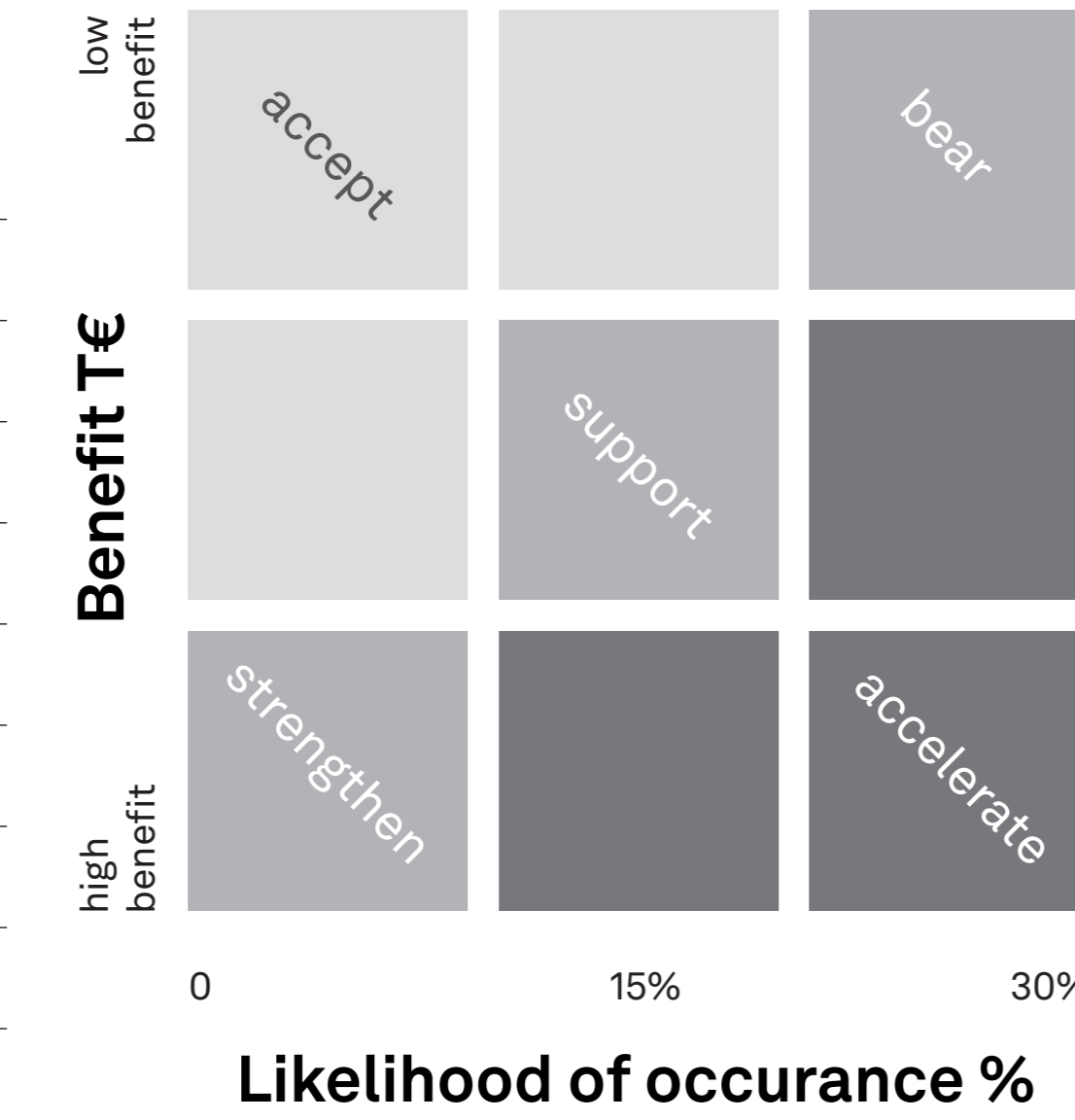
SMART: specific, measurable, achievable, realistic, time-bound

## RISKS / OPPORTUNITIES

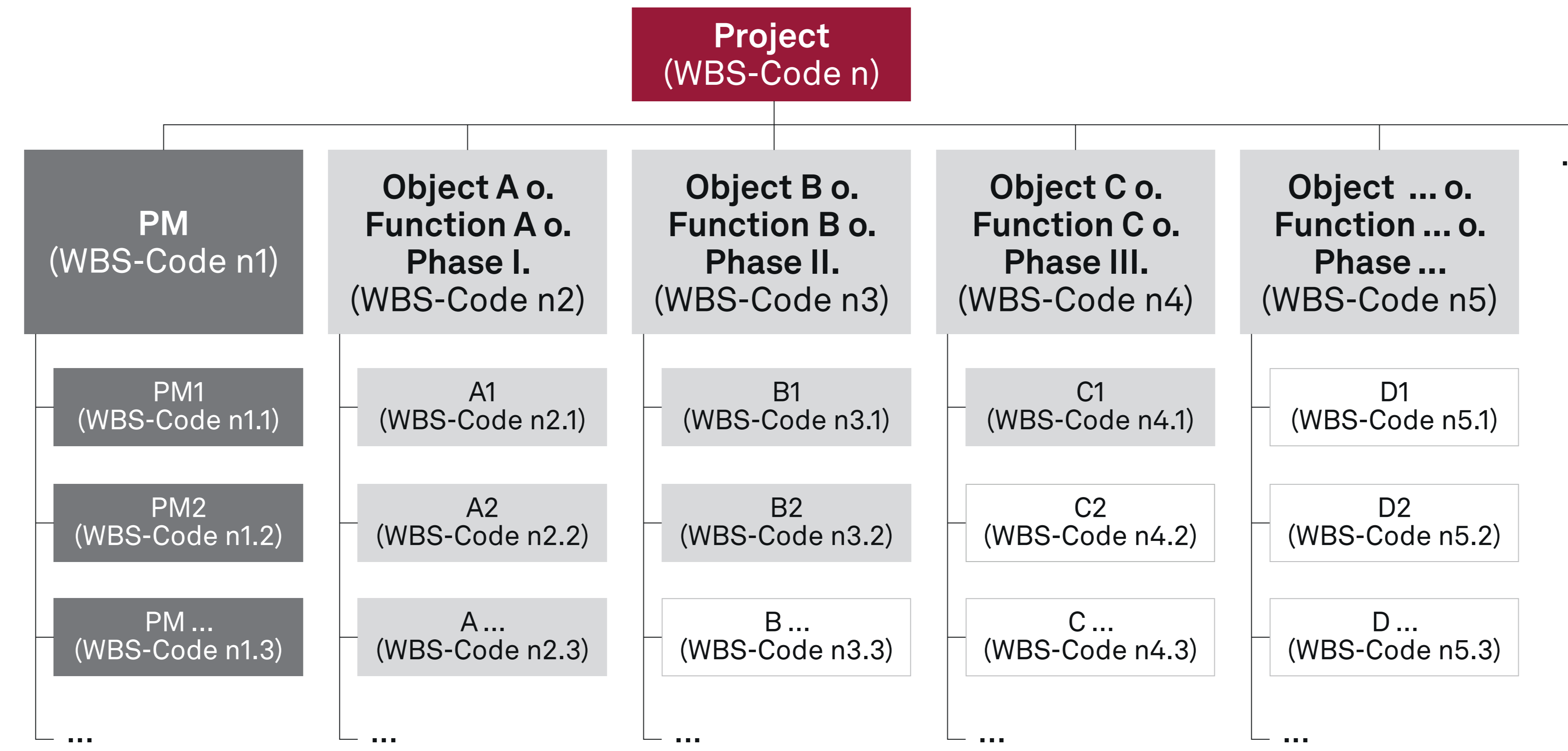
ID	Risk / Opportunity	Cause	Impact	LoO (%)	LoH(T€)	RV(T€)
R001						
R002						
R003						
R004						
R005						
R006						
R007						
R008						
R...						



RM ID	Risk ID	Description of measures (preventive / corrective)	Costs (T€)	LoO new (%)	LoH new (T€)	RV new + Costs (T€)	Decision
RM01	R001						Y/N
RM02	R...						Y/N
RM03							Y/N
RM04							Y/N
RM05							Y/N
RM06							Y/N
RM07							Y/N
RM08							Y/N
RM...							Y/N

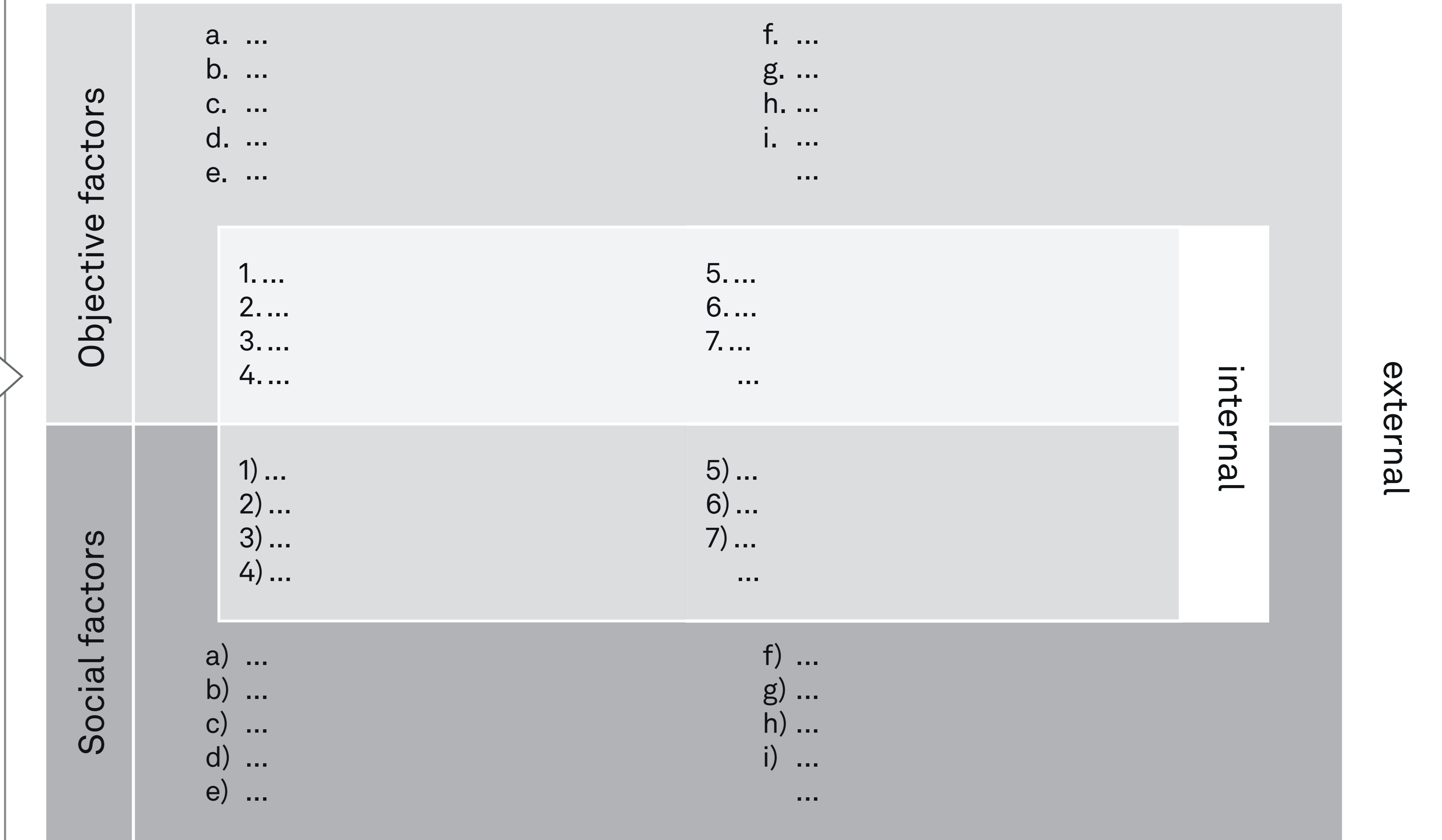


## WORK BREAKDOWN STRUCTURE



INVEST: Independent, Negotiable, Valuable, Estimatable, Small, Testable

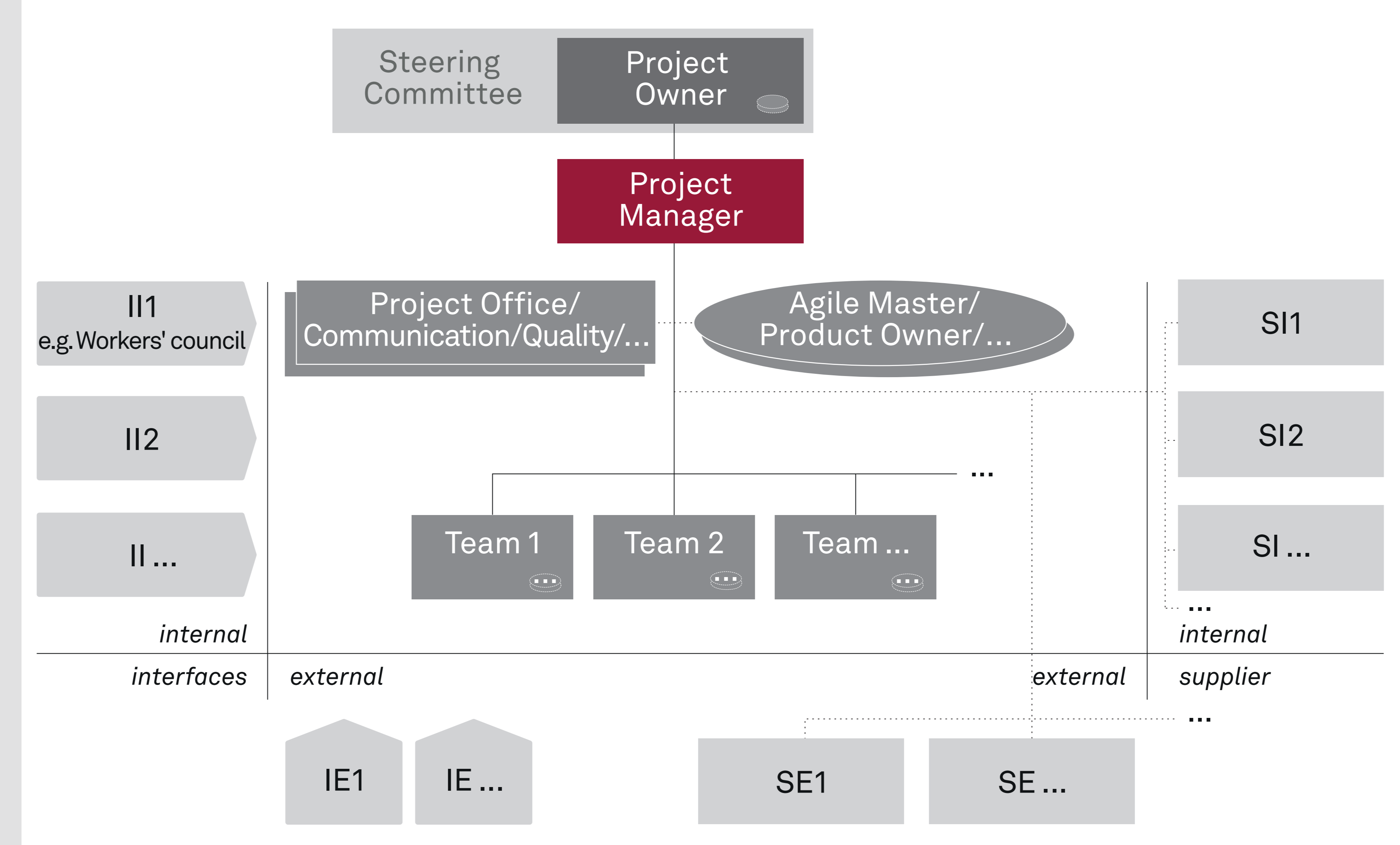
## ENVIRONMENT



## RESSOURCES / COSTS

Task (WBS-Code)	Internal PD (T€/PD)	External PD (T€/PD)	Description Material Costs	Costs (T€)

## PROJECT ORGANISATION



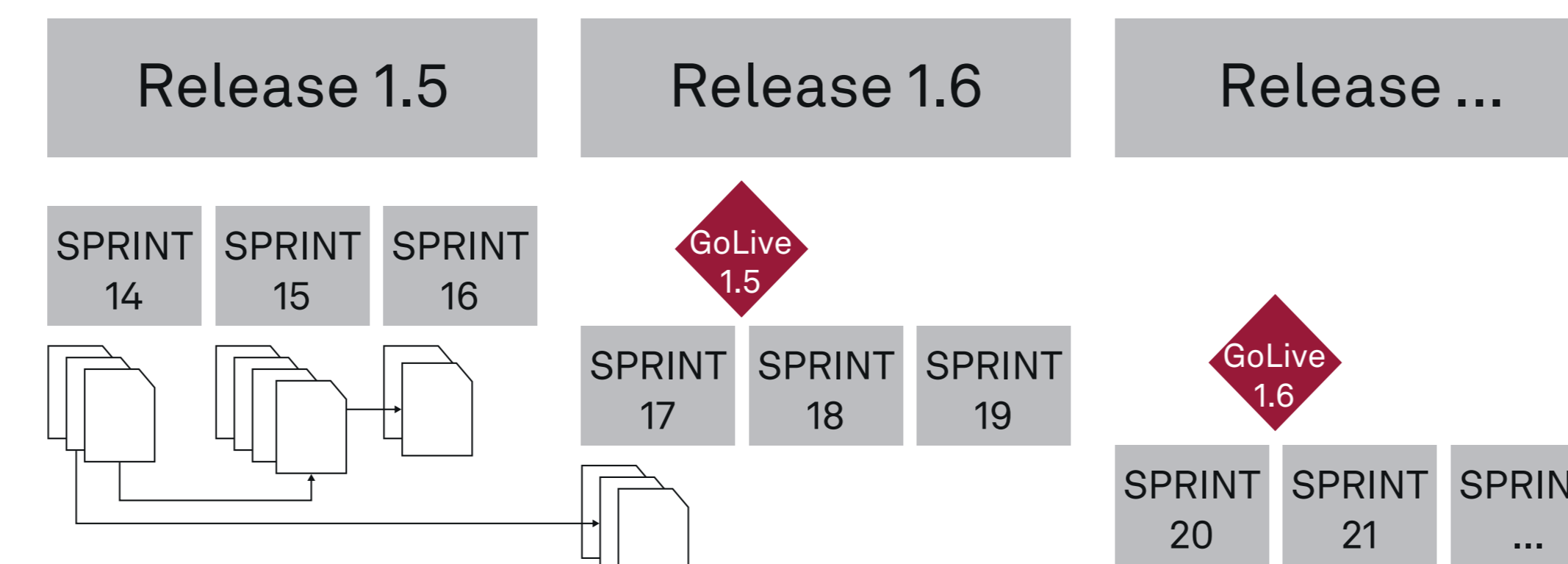
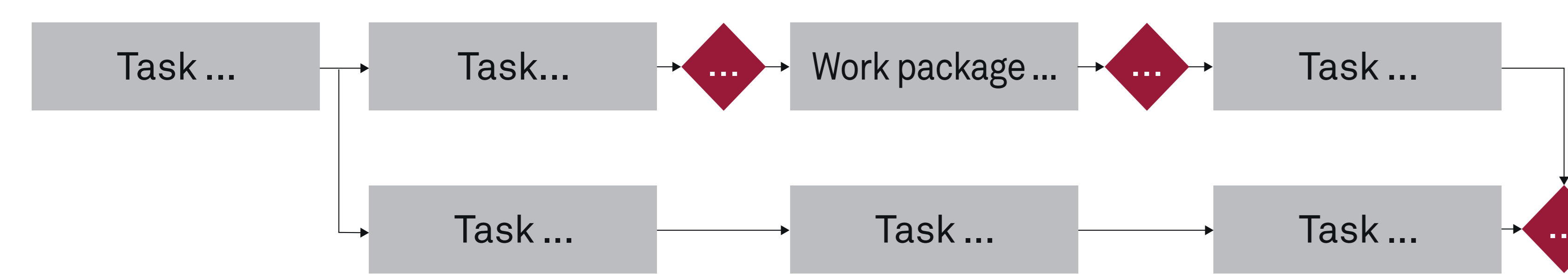
## STAKEHOLDER

ID	Name/ Function	Interest known/ expectation	Interest assumed/ fear	Attitude to project	Impact on project	Potential on conflict
SH01				++ + 0 - --	↑ ↓	↑ ↓
SH02				++ + 0 - --	↑ ↓	↑ ↓
SH03				++ + 0 - --	↑ ↓	↑ ↓
SH04				++ + 0 - --	↑ ↓	↑ ↓
SH05				++ + 0 - --	↑ ↓	↑ ↓
SH06				++ + 0 - --	↑ ↓	↑ ↓
SH07				++ + 0 - --	↑ ↓	↑ ↓
SH...				++ + 0 - --	↑ ↓	↑ ↓

ID	SH ID	Policy / Strategy	Measures	Costs (T€)
SM01	SH01			
SM02	SH...			
SM03				
SM04				
SM05				
SM06				
SM07				
SM...				

## SCHEDULE



## PROJECT PHASES

